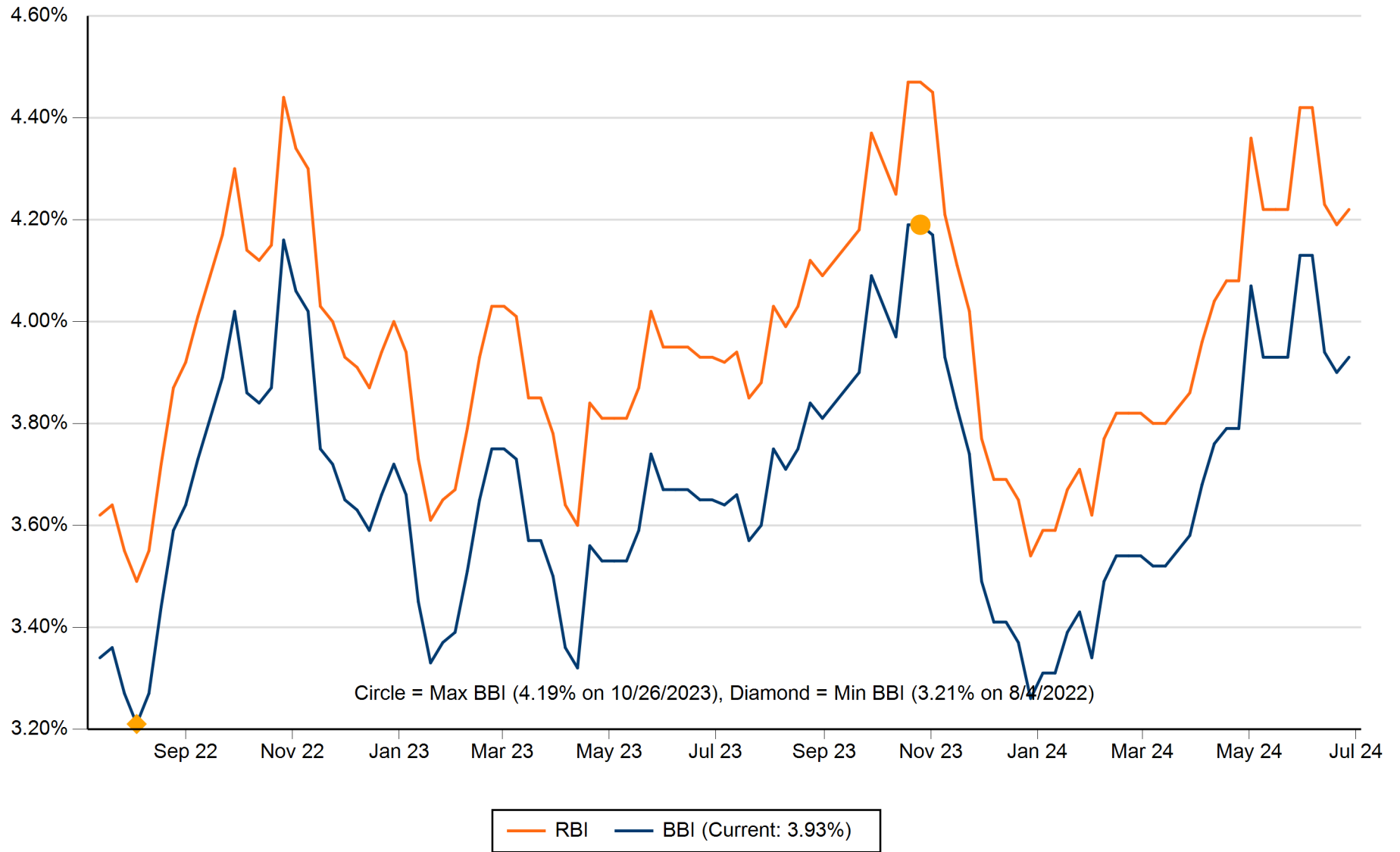


2 YEAR TREND IN MUNICIPAL BOND INDICES

Weekly Rates July, 2022 - July, 2024



Source: The Bond Buyer

The Bond Buyer “20 Bond Index” (BBI) shows average yields on a group of municipal bonds that mature in 20 years and have an average rating equivalent to Moody’s Aa2 and S&P’s AA.

The Revenue Bond Index (RBI) shows the average yield on a group of revenue bonds that mature in 30 years and have an average rating equivalent to Moody’s A1 and S&P’s A+.

